

CERTIQ ON BOOMER E2C

All available information for the specified machine types

Sustainable Productivity

Atlas Copco



OPERATION

Drilling

Total drill meters

Drill meters per drill hour

Utilization

Utilization hours (machine off/idle/working)

Utilization %

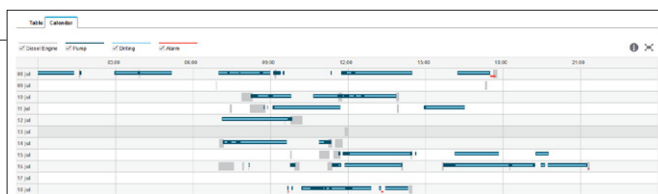
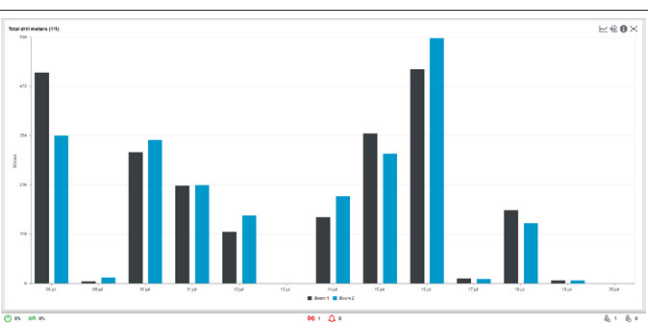
Engine hours*

Drill hours*

Pump hours

Location

Site position*



MAINTENANCE

Service

No. of machines in overdue status

No. of reported services

Predicted date for next service

Hours to next service

Diagnostic

Active alarms

No. of alarms*

Alarm type trending (engine/hydraulics/others)

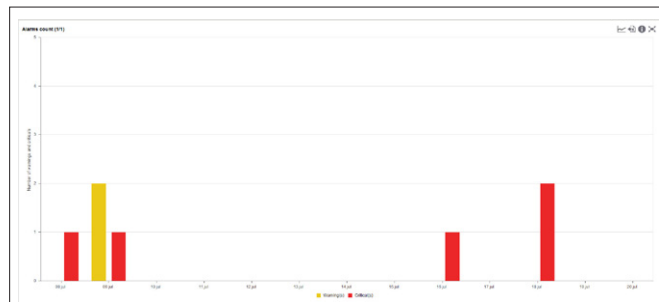
Alarm frequency (Count and time for each type)

Acknowledge alarm

Connectivity

Last communication

Service table		Service plan log						
Service Interval	Description	Unit	Predicted date for service	Next service hours	Status	↑	Total engine hours	Total pump hours
50h	50h TME Impact ser...	Drill unit 2	2015-11-18	23	Upcoming	0	12.771	12.771
125h	125h LHD Engine ser...	Engine	N/A	0	Upcoming	0	12.771	12.771
500h	500h TME Impact ser...	Drill unit 1	2015-12-17	58	Upcoming	0	12.771	12.771



* Available in selected markets on all factory delivered machines

REPORTS

Excel reports

Report subscription

Notification

Mail notification

SMS notification

ADMINISTRATION (ADMINS ONLY)

User settings

Machine settings

Organization settings

AVAILABLE ALARMS

Engine oil pressure low critical

Engine coolant temp high critical

Hydraulic oil temp high critical

Hydraulic oil level low critical

Hydraulic oil filter clogged warning

Hydraulic oil fluid moist alarm

Compressor high stage temp high warning

Latest machine data:		11-17-2015 12:00:00 AM				
Machine model	Machines	Date	Accumulated drill met	Pump hours per day	Drill hours per day	Fuel consumption per h
Boomer E2 C	E2C-BA110	2015-07-08	675 782,8	17,60	9,37	0,0
Boomer E2 C	E2C-BA110	2015-07-09	676 641,9	0,48	0,28	0,0
Boomer E2 C	E2C-BA110	2015-07-10	676 660,6	9,56	5,17	0,0
Boomer E2 C	E2C-BA110	2015-07-11	677 318,6	8,03	5,80	0,0
Boomer E2 C	E2C-BA110	2015-07-12	677 788,5	5,89	3,69	0,0
Boomer E2 C	E2C-BA110	2015-07-13	678 075,1	0,00	0,00	0,0
Boomer E2 C	E2C-BA110	2015-07-14	678 075,1	5,61	3,14	0,0
Boomer E2 C	E2C-BA110	2015-07-15	678 442,0	9,04	5,04	0,0

(Some variations of supported alarms may exist due to model year and engine alternative)

Atlas Copco Rock Drills AB
 (publ) SE-701 91, Örebro, Sweden
 Phone: +46 19 670 70 00
 Reg. no: 556077-9018 www.atlascopco.com

