

# CertiQ on Boomer with Rig Control System 4

All available information for the specified machine types



## Boomer model supported

E1 C, E1 C DH, E2 C, E3 C, L1 C, L1 C DH, M1 C, M2 C, WE3 C, XE3 C, XE4 C

## Operation

### Drilling

Total drill meters

Drill meters per drill hour

### Utilization

Utilization hours (machine off/idle/working)

Utilization %

Engine hours

Drill hours

Pump hours

### Location

Site position

## Maintenance

### Service

No. of machines in overdue status

No. of reported services

Predicted date for next service

Hours to next service

### Diagnostic

Active alarms

No. of alarms

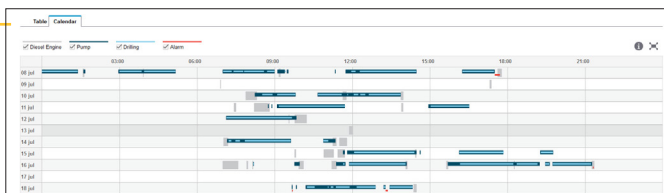
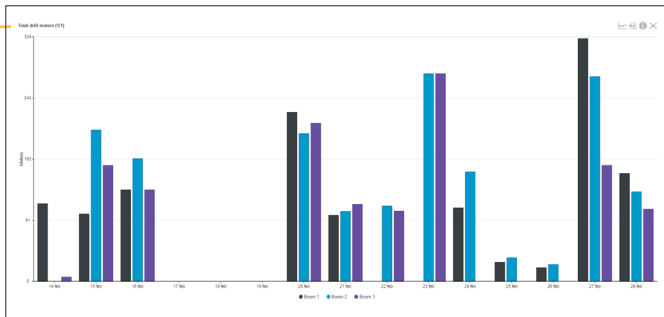
Alarm type trending (engine/hydraulics/others)

Alarm frequency (Count and time for each type)

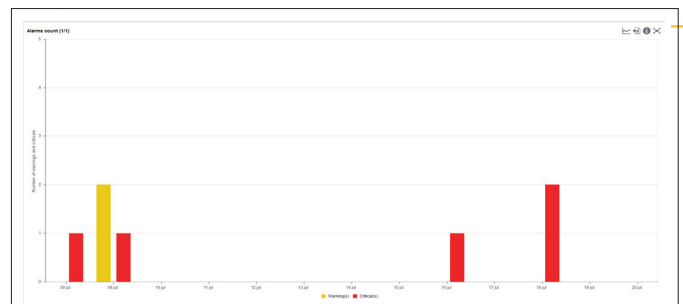
Acknowledge alarm

### Connectivity

Last communication



Service Interval	Description	Unit	Predicted date for service	Next service hours	Status	#	Total engine hours	Total pump hours
50h	50h TME Impact ser...	Drill unit 2	2015-11-18	23	Upcoming	0	0	12.771
125h	125h LHD Engine ser...	Engine	N/A	0	Upcoming	0	0	12.771
500h	500h TME Impact ser...	Drill unit 1	2015-12-17	58	Upcoming	0	0	12.771



## Reports

Excel reports

Report subscription

Notification

Mail notification

SMS notification

## Administration (admins only)

User settings

Machine settings

Organization settings

## Available alarms

Engine oil pressure low critical

Engine coolant temp high critical

Hydraulic oil temp high critical

Hydraulic oil level low critical

Hydraulic oil filter clogged warning

Hydraulic oil fluid moist alarm

Compressor high stage temp high warning

Machine model	Machines	Date	Accumulated drill met	Pump hours per day	Drill hours per day	Fuel consumption per f
Boomer E2 C	E2C-BA110	2015-07-08	675 782,8	17,60	9,37	0,0
Boomer E2 C	E2C-BA110	2015-07-09	676 641,9	0,48	0,28	0,0
Boomer E2 C	E2C-BA110	2015-07-10	676 660,6	9,56	5,17	0,0
Boomer E2 C	E2C-BA110	2015-07-11	677 318,6	8,03	5,80	0,0
Boomer E2 C	E2C-BA110	2015-07-12	677 788,5	5,89	3,69	0,0
Boomer E2 C	E2C-BA110	2015-07-13	678 075,1	0,00	0,00	0,0
Boomer E2 C	E2C-BA110	2015-07-14	678 075,1	5,61	3,14	0,0
Boomer E2 C	E2C-BA110	2015-07-15	678 443,0	0,04	0,04	0,0

(Some variations of supported alarms may exist due to model/year and engine alternative)

## Epiroc Rock Drills AB

SE-701 91 Örebro, Sweden

Phone no: +46 (0)10 7550 000

Org no: 556077-9018

epiroc.com

