

# CERTIQ ON SCOOPTRAM ST1030, ST1030LP, ST1530

All available information for the specified machine types

*Sustainable Productivity*

*Atlas Copco*



## OPERATION

### Utilization

Utilization hours (machine off/idle/working)

Utilization %

Engine hours\*

Transmission hours

### Fuel consumption

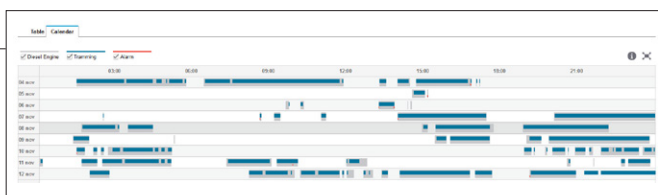
Total liters

Liter per hour

Total CO2 emission

### Location

Site position\*



## MAINTENANCE

### Service

No. of machines in overdue status

No. of reported services

Predicted date for next service

Hours to next service

### Diagnostic

Active alarms

No. of alarms\*

Alarm type trending (engine/hydraulics/others)

Alarm frequency (Count and time for each type)

Acknowledge alarm

### Connectivity

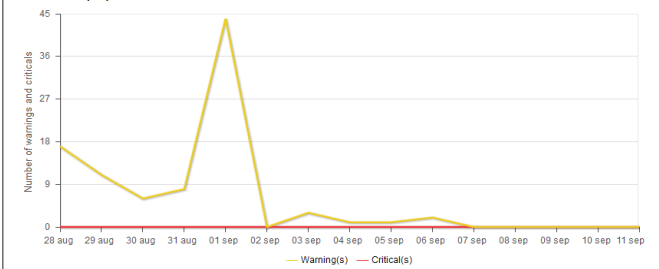
Last communication

### Service statistics

#### Service table Service plan log

Service interval	Description	Unit	Predicted date for service	Next service hours ↓	Status	Total engine hours
250h	250h LHD Engine service	Engine	2015-09-19	73	Upcoming	1 677

### Alarms count (1/1)



\* Available in selected markets on all factory delivered machines

**REPORTS**

Excel reports

Report subscription

**Notification**

Mail notification

SMS notification

**ADMINISTRATION (ADMINS ONLY)**

User settings

Machine settings

Organization settings

**AVAILABLE ALARMS**

Engine oil pressure low critical

Engine overspeed

Engine coolant temp high warning

<b>Latest machine data:</b>	12-03-2015 12:00:00 AM				
<b>Machine model</b>	<b>Machines</b>	<b>Date</b>	<b>Engine hours per day</b>	<b>Transmission hours</b>	<b>Accumulated fuel consumption</b>
ST1030	ST1030 LH 728	2015-11-04	15,96	12,77	72 488,3
ST1030	ST1030 LH 728	2015-11-05	17,67	13,73	72 922,9
ST1030	ST1030 LH 728	2015-11-06	14,56	10,77	73 394,9
ST1030	ST1030 LH 728	2015-11-07	13,75	11,79	73 764,2
ST1030	ST1030 LH 728	2015-11-08	15,27	12,75	74 159,5

(Some variations of supported alarms may exist due to model year and engine alternative)

**Atlas Copco Rock Drills AB**  
 (publ) SE-701 91, Örebro, Sweden  
 Phone: +46 19 670 70 00  
 Reg. no: 556077-9018 [www.atlascopco.com](http://www.atlascopco.com)

