

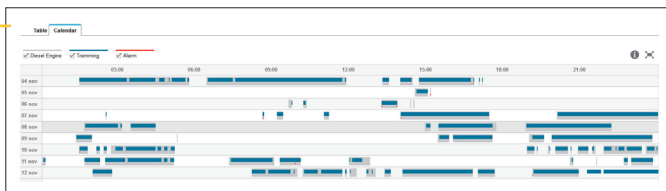
CertiQ on Scooptram ST1030, ST1030LP, ST1530

All available information for the specified machine types



Operation

| |
|--|
| Loading |
| Dump/Load point* |
| Material* |
| Utilization |
| Utilization hours (machine off/idle/working) |
| Utilization % |
| Engine hours |
| Transmission hours |
| Delay/status code* |
| Operator ID* |
| Fuel consumption |
| Total liters |
| Liter per hour |
| Total CO ₂ emission |
| Location |
| Site position |



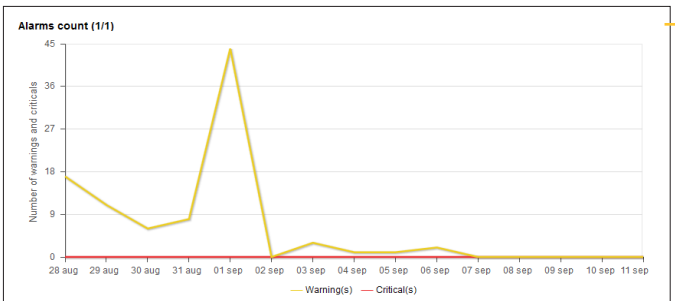
Maintenance

| |
|--|
| Service |
| No. of machines in overdue status |
| No. of reported services |
| Predicted date for next service |
| Hours to next service |
| Diagnostic |
| Active alarms |
| No. of alarms |
| Alarm type trending (engine/hydraulics/others) |
| Alarm frequency (Count and time for each type) |
| Acknowledge alarm |
| Connectivity |
| Last communication |

Service statistics

Service table | Service plan log

| Service interval | Description | Unit | Predicted date for service | Next service hours ↓ | Status | Total engine hours |
|------------------|-------------------------|--------|----------------------------|----------------------|----------|--------------------|
| 250h | 250h LHD Engine service | Engine | 2015-09-19 | 73 | Upcoming | 1 677 |



*Available with CertiQ onboard functionality

Reports

Excel reports

Report subscription

Notification

Mail notification

SMS notification

Administration (admins only)

User settings

Machine settings

Organization settings

Available alarms

Engine oil pressure low critical

Engine overspeed

Engine coolant temp high warning

| Latest machine data: | 12-03-2015 12:00:00 AM | | | | |
|----------------------|------------------------|------------|----------------------|--------------------|------------------------------|
| Machine model | Machines | Date | Engine hours per day | Transmission hours | Accumulated fuel consumption |
| ST1030 | ST1030 LH 728 | 2015-11-04 | 15,96 | 12,77 | 72 488,3 |
| ST1030 | ST1030 LH 728 | 2015-11-05 | 17,67 | 13,73 | 72 922,9 |
| ST1030 | ST1030 LH 728 | 2015-11-06 | 14,56 | 10,77 | 73 394,9 |
| ST1030 | ST1030 LH 728 | 2015-11-07 | 13,75 | 11,79 | 73 764,2 |
| ST1030 | ST1030 LH 728 | 2015-11-08 | 15,27 | 12,75 | 74 159,5 |

(Some variations of supported alarms may exist due to model year and engine alternative)

Epiroc Rock Drills AB

SE-701 91 Örebro, Sweden

Phone no: +46 (0)10 7550 000

Org no: 556077-9018

epiroc.com

